

CERTIFICATE OF LOCATION OF GOVERNMENT CORNER

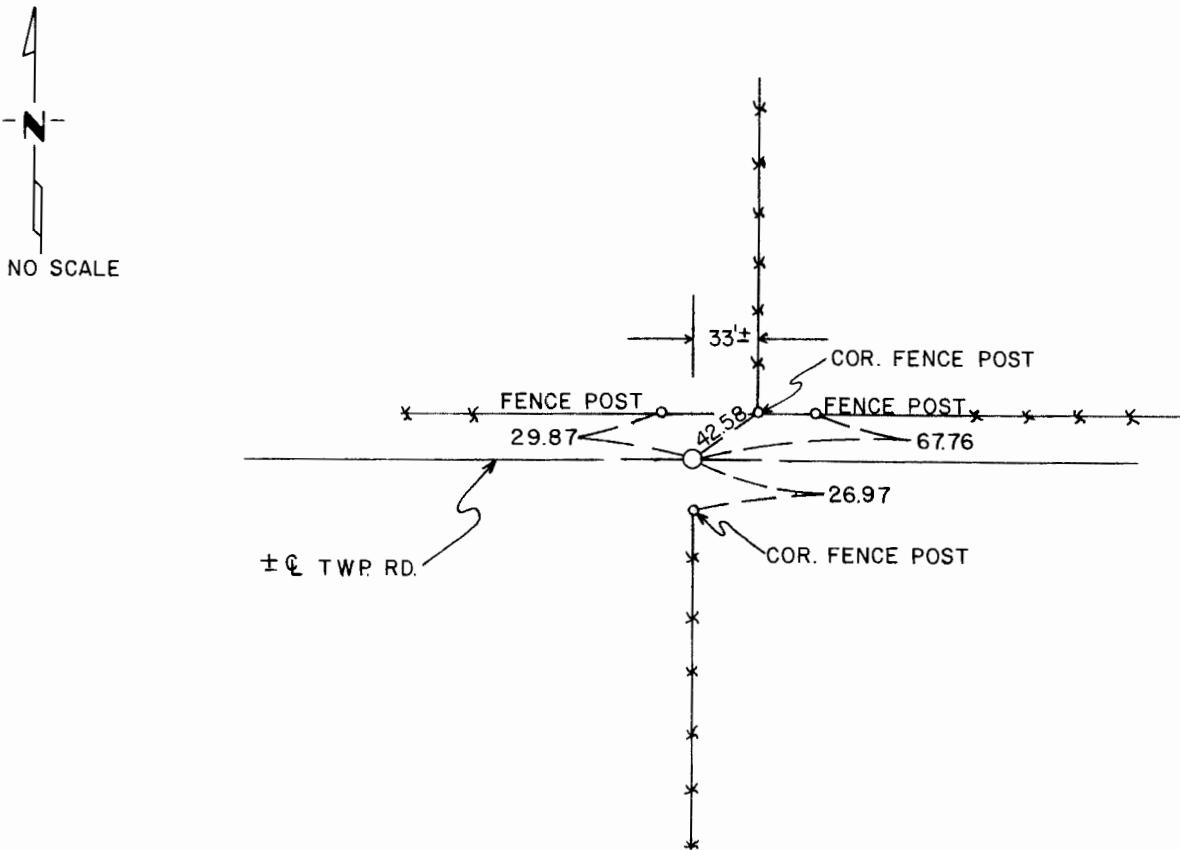
NORTHEAST Corner of Section 3, Township 105 N., Range 42 W., 5th P.M.

STATE OF MINNESOTA, County of MURRAY

At the corner location shown on the sketch:

- On 4/4/78 found ~~//~~ two stones (0.5'± dia. and 0.8'± dia.-flat) 3.0'±
DATE deep; raised to 0.5'± below grade with 3/8" rebar with "Martin R.L.S.
 left monument as found, lowered monument, removed monument (explain)
12967" yellow plastic cap.
- On _____ placed a _____
DATE

SKETCH OF REFERENCE TIES



Statement of evidence relative to this corner location is on back of page.

I hereby certify that this document and the data contained herein was prepared by me or under my direct supervision.

Greg S. Siefert 6/19/78
SIGNATURE DATE

Registration No. 12967
 Land Surveyor, Professional Engineer
 County Surveyor, County Engineer

OFFICE OF THE REGISTER OF DEEDS
 County of MURRAY

I hereby certify that this document was filed in the Reg. of Deeds office at _____ .M. on the _____ day of _____ A.D., 19 ____

Register of Deeds _____
 By _____, Deputy
 DOCUMENT NO. _____

Statement of Evidence:

G.L.O. - Survey by J. W. Myers; completed between June 22, 1861, and Sept., 1861; "deposited charcoal, made mound of earth and sod with trench and pits as per instructions".

Subsequent Resurvey - Murray County Highway Engineer - "Surveyor's Record Book"; Survey by J. W. Woolstencroft, Murray County Surveyor; May 11, 1898-"Government mound and pits 2 small stones"; Found two small stones as described on reverse side of this sheet; Location matches fence line to south; Accepted stones as perpetuation of original government corner; Raised corner location to grade as described on reverse side of this sheet.

164264

State of Minnesota, }
County of Murray, }

I hereby certify that the within instrument
was filed in this office for record on the
7th day of August, A.D. 19 81;

at 8:30 o'clock P. M., and was duly re-
corded as Microfilm Document No. 164 264

Willard W. Orme
County Recorder